

# Franklin High School

**Special points of interest:**

- College Visits & Applications
- College Admissions Testing
- College Fairs and Open Houses
- Career Programs
- Financial Aid and Scholarship Planning
- College Planning Tips

**Inside this issue:**

<i>Prep Tips for the SAT</i>	2
<i>SAT Test Dates</i>	2
<i>ACT Test Dates</i>	2
<i>Paying for College</i>	3
<i>Tips from the Common App/Financial Aid</i>	4
<i>Open Houses and Special Interest Programs</i>	5
<i>Scholarships</i>	6
<i>College Fairs and College Rep Visits</i>	7

## Scholarships

Start your search by contacting Your State Department of Higher Education  
[www.mhec.state.md.us](http://www.mhec.state.md.us)  
 (scholarship search, grants, awards, and more)  
 Legislative Scholarships become available January 2 from your Delegates and Senators

If you do not know how to contact your state senator or delegates, go to [www.mdelect.net](http://www.mdelect.net) or call the Board of Supervisors of Elections at 410-887-5700.

Delegate and Senatorial scholarships must be used at a Maryland school unless your major is not offered at any MD schools.

You must complete and file your FAFSA no later than March 1 to be eligible.



## College Applications

Still working on your college applications? Remember that all forms must be completed and submitted electronically on Naviance before a Counselor considers it “ready”. From that point, the Counselor has 2-4 weeks to send the information requested.

Don’t forget to pay any fees you may owe in regards to transcript requests as they later become obligations and can prevent you from participating in senior activities.

# Preparing for the SAT and ACT

**\*Please meet with your counselor prior to registering for the SAT!**

Taking the SAT is an important step in the college application process. Since high schools across the country have varying course rigor and grading standards, the SAT provides college admission offices with a standard indicator of how students may perform in college.

The SAT tests your critical reading, math reasoning, and writing skills. Nearly every college in the U.S. uses the SAT to assess how ready students are for college.

It is very important to prepare for the SAT and to stay on top of the SAT registration process. The Franklin High



Studying online for the SAT

School **Library Media Center** has the following resources:

- SAT Test Taking Strategy Books
- SAT Practice Tests
- SAT Subject Test Books
- SAT Subject Test Language Books with Audiocassette Tapes

There are also SAT preparation courses available at:

- CCBC: [www.ccbcmd.edu](http://www.ccbcmd.edu)
- Sylvan Learning Centers: <http://tutoring.sylvanlearning.com/>

- Kaplan Test Prep: <http://www.kaptest.com/>

**The following Websites** are another great resource for SAT practice:

[www.collegeboard.com](http://www.collegeboard.com)

[www.actstudent.org](http://www.actstudent.org)

<http://number2.com>

[www.barronstestprep.com](http://www.barronstestprep.com)

[www.petersons.com](http://www.petersons.com)

[www.khanacademy.com](http://www.khanacademy.com) (Free Mobile App also available)

## College Admissions Testing: SAT Test Dates

Test Dates	Test	Registration Deadline	Late Reg. Deadlines (\$28)
<b>December 5, 2015 *</b>	SAT & Subject Tests	November 5, 2015	November 23, 2015
<b>January 23, 2016*</b>	SAT & Subject Tests	December 28, 2015	January 12, 2016
<b>March 5, 2016</b>	SAT	February 5, 2016	February 23, 2016
<b>May 7, 2016 *</b>	SAT & Subject Tests	April 8, 2016	April 26, 2016
<b>June 4, 2016 *</b>	SAT & Subject Tests	May 5, 2016	May 25, 2016

## ACT Test Dates (Take the ACT with Writing)

Test Dates	Registration Deadline	Late Fee Required (\$25)
<b>February 6, 2016</b>	January 8, 2016	January 9 — 15, 2016
<b>April 9, 2016 *</b>	March 4, 2016	March 5 — 18, 2016
<b>June 11, 2016</b>	May 6, 2016	May 7 — 20, 2016

\* Test given at Franklin High School See your counselor if you are on free and reduced lunch for a fee waiver

# Paying for College

More than half of students in college receive some sort of financial aid. There are three main types of aid: Loans that have to be repaid; grants and scholarships that do not have to be repaid; and employment programs such as work study, that allow students to earn money while still in school.

How much aid you are eligible for depends on your financial need. For an estimate, go to:

<https://fafsa.ed.gov/FAFSA/app/f4cForm?execution=e1s1>



State, school, and scholarship money depends on the program. Ask college financial aid offices for information about aid available at their schools.

Do a free scholarship search at: <https://studentaid.ed.gov/redirects/federal-student-aid-ed-gov>

To apply for financial aid, you must fill out the FAFSA (free application for federal student aid) at [www.fafsa.gov](http://www.fafsa.gov). Don't forget to get a pin number first at [www.pin.ed.gov](http://www.pin.ed.gov). You may apply on or after January 1.

FAFSA assistance is free! There are also numerous free scholarship searches. Do not get scammed! Private scholarships are slated for specific applicants and make these opportunities easy to find. Do not be duped by someone who tells you they can guarantee you a scholarship or that they need your credit card to hold a scholarship.

*“Don't get scammed during your scholarship search and financial aid application process!”*

## Scholarship Sites

<http://www.zinch.com/>

<http://www.fastweb.com/>

<http://www.cappex.com/>

<http://www.scholarshipexperts.com>

<http://www.scholarships.com>

<http://mappingyourfuture.org/MiddleHighSchool/> (financial aid)

[www.studentscholarships.org/newsletter.php](http://www.studentscholarships.org/newsletter.php)

<http://www.finaid.org> (financial aid)

College Board's Scholarship Search

<http://www.studentscholarships.org/>

<http://supercollege.com/>

<http://fafsa.ed.gov>

## Service Learning

Service learning is school-based participation in organized service projects that meet real needs in the community. Each student must perform at least 75 hours in order to be eligible to graduate. All service hours must be pre-approved to count toward the graduation requirement. Any senior who has not completed the 75 hours will not be allowed to attend prom or other senior activities. Seniors who have not earned at least 60 hours will not be eligible for second semester parking permits.

Mrs. Gilberto is Franklin's Service Learning Coordinator. If you need to acquire service learning hours, please see her or your counselor for further information.

Contact: [dgilberto@bcps.org](mailto:dgilberto@bcps.org)

# Tips from the Common Application

## Take Note of Submission Sequence:

Approximately one-third of our members require that students submit a payment or supplement—or both—before submitting the application. In such cases, these requirements are displayed in the *Application* section of a student's *My Colleges* page.

The payment condition is especially important for students to understand. Processing online payments can take one to two days, and a record of payment will not appear in a student's account until the fee has been processed. Students who wait until the last minute may find that they are unable to submit an application because of the payment processing delay.

## School Forms Reminder

Please remember that school forms submitted through Common App Online operate the same way as the online application: once a school form has been submitted, it may not be unsubmitted. If you need to correct errors, you must do so by mail. You might consider suggesting to your teachers that they avoid naming specific colleges and universities in their evaluations, since they will be able to upload one and only one letter.

## Last Word on the Last Minute

Advise your students not to wait until the 11th hour to submit their applications. Here's one more: if they find themselves needing help from the Support Team, we might not have enough time to reply before the clock strikes midnight. Help us help them by encouraging them not to wait.

# Financial Aid

## Types of Financial Aid:

- 1.) *Grants*: State and federal grants do not have to be repaid. Based on financial need.
- 2.) *Scholarships*: Awarded based on merit or high academic achievement. Scholarships do not have to be repaid.
- 3.) *Loans*: There are public and private loans. Unlike grants, loans must be repaid.
- 4.) *Student employment or work study*: An opportunity to work and earn money while in school to pay for college expenses.

## Applying for Financial Aid:

- 1.) Go to <http://pin.ed.gov> to request a PIN that you will need for your next step below.
- 2.) To apply for student financial aid from the federal government, including the Pell Grant, Perkins Loan, Stafford Loan and work-study, you will need to submit the [Free Application for Federal Student Aid \(FAFSA\)](#). There is no charge for submitting this form. The FAFSA is also required by all state and many school student assistance programs.
- 3.) The FAFSA, should be submitted as soon as possible after January 1, but no sooner. You cannot submit the form before January 1, because the need analysis process uses your financial information from the prior tax year when calculating eligibility for the upcoming award year. To meet the deadline for Maryland, you should submit the form no later than March 1.
- 4.) Some private colleges and universities will require one or more supplemental forms to obtain information not included on the FAFSA. They may have their own forms or they may ask you to complete the College Board's [CSS PROFILE](#) form.
- 5.) If the college of your choice and your parents cannot meet the expenses for your college tuition, you may have to borrow money. Educate yourself about loans.
- 6.) Check out these sites for additional financial aid resources:

<http://www.student-loans.com/Repay.html>

# College Open Houses and Information Sessions

**Loyola University:** Open house offering an admission counselor presentation, question and answer panel, student-guided tours, insider tips on the admission process. They begin at 11am and end approximately 1:30pm. They are being held on the following Saturdays this year: December 5, January 23, February 13, March 12 and April 23. Reservations are required. Register online at [www.loyola.edu/Saturday](http://www.loyola.edu/Saturday).

**Seton Hall University:** February 14 and April 24. For more information or to register, visit [www.shu.edu/visiting](http://www.shu.edu/visiting)

**Roanoke College:** Spring open houses are January 18, February 14, March 28-April 1, April 2, April 16. Register online at [Roanoke.edu/visit](http://Roanoke.edu/visit) or call 800-388-2276

**Shippensburg University:** Spring open houses are March 19, 2016 and April 16, 2016. Schedule a visit at [www.ship.edu/visit](http://www.ship.edu/visit).

## Special Interest Programs

**Academic Common Market:** If public institutions in Maryland do not offer programs in the field of study a student wishes to pursue, it may be possible to arrange a waiver of out-of-state tuition in one of the 15 participating states. Maryland students should obtain additional information by visiting the website for the latest listings and applications. [www.mhec.state.md.us](http://www.mhec.state.md.us).

**Common Application:** save time by completing only one application. The Common Application which is accepted by 391 selective colleges and universities is currently available on line at [www.commonapp.org](http://www.commonapp.org).

**NCAA Clearinghouse:** Make sure you are eligible to participate in college sports. Certify online at [www.eligibilitycenter.org](http://www.eligibilitycenter.org). It is your responsibility to be sure that you have taken the correct courses. Be sure to designate the clearinghouse as one of your SAT/ACT recipients by using the code 9999

**Baltimore Electrical Joint Apprenticeship and Training Committee (JATC):** Offers students the ability to “earn while they learn”. Students receive 30 credits at the Community Colleges of Baltimore County to be used towards a degree in Construction Technology. They will also earn \$14.24/hour with benefits. All applicants must apply in-person and applications are accepted year-round, Monday through Friday between the hours of 9:30 a.m. and 4:30 p.m. For more information, please visit [www.jatc24.org](http://www.jatc24.org)

# Scholarships

**Baltimore Metropolitan Alumnae Chapter, Delta Sigma Theta Sorority, Inc.:** Offering a four-year renewable scholarship in the amount of \$1,500. Deadline is **February 21, 2016** but applications must be postmarked by January 11. Minimum SAT score of 1275 or ACT score of 19. See Mrs. Scott for the application.

**Armed Forces Communications Electronics Association (AFCEA) Central Maryland Chapter:**

Merit and Freedom Scholarships are available. Visit their website <https://afceacmd.org/index.php/scholarship-overview> for more information and to apply. Deadline is **December 21, 2015**.

**Abbott and Fenner Scholarship Program:** Up to \$1,000 awarded. Deadline is **June 10, 2016**. Must submit an essay. Go to their website <http://www.abbottandfenner.com/scholarships.htm> to learn more and apply.

**Maryland Farm Bureau:** Five \$2,000 scholarships. Applicants or parents of applicants must be members of Maryland Farm Bureau. Three of the scholarships will be offered to agricultural curriculum majors and two scholarships will be offered to non-agricultural or agricultural curriculum majors. Applications, available in the Counseling Office, must be submitted with a photo and essay. Please come to Counseling to get the application. Deadline is **February 1, 2016**

**Baltimore County Retired School Personnel Association, Inc. BCRSPA & WEBCO Memorial Scholarship:**

Seven memorial scholarships of \$1,500 will be awarded for educational expenses. Deadline is **February 23, 2016**. Go to [www.bcrspa.org](http://www.bcrspa.org) for an application and more details

**Clare and Robert Moore Scholarship Fund:** For students applying to Notre Dame of Maryland and are interested in English and/or theater. Deadline is **April 15, 2016**. Visit their website <http://crmoorescholarship.org/> for more information and to apply.

**GE-Reagan Foundation Scholarship Program:** Awards up to 20 college bound students who demonstrate exemplary leadership, drive, integrity and citizenship with \$10,000 renewable scholarships. Deadline is **January 7, 2016**. Apply online <http://www.reaganfoundation.org/GE-RFScholarships.aspx>

**Mount Aloysius College:** Mercy Presidential Scholarship offers 30 competitive scholarships of \$48,000 dispersed over 4 years. Candidates must demonstrate a solid academic record, commitment to home, school and community and possess leadership abilities, participate in extracurricular activities, volunteer and be involved in community service projects. For more information call 814-886-6383 or [mtaloy.edu](mailto:mtaloy.edu)

**Black College Expo:** Win scholarship money by writing an essay on "Why is a College Education Important to Me?" All entries must be typed, double spaced and embedded in the email (no attachments). Email the essay to [scholarship@thecollegeexpo.org](mailto:scholarship@thecollegeexpo.org). The email subject line must have: first name/last name/year/which expo/scholarship. More details are available at [www.thecollegeexpo.org](http://www.thecollegeexpo.org). The DC/Maryland expo will be held on March 5, 2016. The scholarship deadline is February 22, 2016.

**Young Entrepreneur Foundation:** 100 scholarships will be awarded to young entrepreneurs, ranging from \$2,000 to \$25,000. Graduating high school seniors who operate their own small business are eligible to receive a 2016 NFIB Young Entrepreneur Award. Visit [www.NFIB.com/YEA](http://www.NFIB.com/YEA) for more information and to apply online between October 1 and December 18, 2015.

**The Martin Luther King Scholar Program:** For students applying to Ithaca College. Open to academically talented U.S. citizens and permanent residents from ethnic and racial backgrounds that have been historically underrepresented in U.S. higher education. For more information, go to [my.ithaca.edu](http://my.ithaca.edu)

**Leadership in Service Scholarship at University of Dayton:** An award of \$10,000 given to students who, after having met their admission requirements, have innate desires for personal development and is committed to service within his or her school, church or community. The deadline is **January 31, 2016**. You must be nominated by Mrs. Scott. If you are interested, please see her.

**Roanoke College Scholars Competition:** Recognizes and awards students of superior academic and leadership abilities. There is an on-campus competition. Deadline is **January 4, 2016**. For more information and to apply, go to [Roanoke.edu/scholars](http://Roanoke.edu/scholars)

**Fairleigh Dickinson Presidential Scholarship:** Full-tuition scholarship for high-achieving students and are annually renewable for four years. Deadline is **January 15, 2016**. For more information, visit [fd.edu/presidential](http://fd.edu/presidential). To be nominated, see Mrs. Scott.

**Kurt M. Chenoweth Memorial Foundation:** A \$1,000 scholarship will be given to 3 males and 3 females in Baltimore County. To be eligible, you must have a minimum of a 2.0 GPA, provide enrollment verification at an accredited two or four year college or technical school, complete the application and essay and have a brief reference form completed by a peer. The application with all supporting documents must be received by **March 11, 2016**. Applications are available in the Counseling Office.

# College Fairs and Financial Aid Night

**Historical Black Colleges and Universities (HBCU) Tour 2016**—Educational tour that introduces students to college campus life and provides them with a series of informational sessions. Affords students with opportunities to make direct on-site inquiries of college officials while simultaneously matching institutions of higher learning with their educational goals and career aspirations. This tour is scheduled during spring break, from March 28-April 1, 2016 and is open to students in grades 9-12. The tour will focus on the following universities: University of Maryland Eastern Shore, Cheney State University, Delaware State University, Lincoln University, Harvard University, Yale University and MIT. The cost is \$650. Visit <http://www.buildnewleaders.com> for more information and to register. **Black College Expo:** Save the date! The DC/Maryland expo will be held on March 5, 2016 at Bowie State University.

## Colleges Visiting Franklin High School

\*\*Please sign up on Naviance and then come to the Counseling Office to fill out a white pass. Have the teacher of the class you will be missing sign the pass at least 24 hours in advance of the visit and then come to the Counseling Office at the time of the visit.

Monday            December 7, 2015            10:45 a.m.    Stratford University

### TO ACCESS FUTURE NEWSLETTERS....

- ◆ Go to <http://franklinhs.bcps.org>
- ◆ Click on For Students
- ◆ Click on Departments, then Counseling
- ◆ On the left hand side, select Senior Newsletters
- ◆ Open the newsletter by clicking on the month you wish to view.

All newsletters will be updated monthly, as long as there is enough material to produce one. We will also have several hard copies available in our office.

**BCPS**

Franklin High School  
12000 Reisterstown Road  
Reisterstown, MD 21136

Phone: 410-887-1119  
Counseling Phone: 410-887-1121  
Fax: 410-833-4434



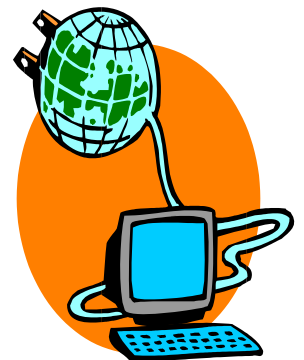
**In the Counseling Office, we address academic, personal, social, college and career concerns and questions.** *Students come to Guidance to discuss academic concerns such as: scheduling, student-teacher relations, grades, alternative education, attendance, class work and homework, college and career searches, and financial aid and scholarship information. Personal issues may include: abuse and neglect, bullying, conflict management, cultural diversity, depression, divorce, eating disorders, peer relations, pregnancy, and suicide. We also have resources to share on these topics.*

**Maryland Youth Crisis Hotline** 1-800-422-0009

- 24 hour service
- Crisis intervention
- Confidential

## Internet Site for College Planning

<http://www.mhec.state.md.us>  
<http://www.collegeboard.com>  
<http://www.collegeview.com>  
<http://www.collegeview.com>  
<http://www.educationplanner.org/>  
<http://www.mycollegeguide.org/>  
<http://www.princetonreview.com>  
<http://www.petersons.com>  
<http://colleges.usnews.rankingsandreviews.com/best-colleges>  
<http://www.youniversitytv.com>  
<http://www.khanacademy.org> (free mobile app also available)



The internet is a great source of information for your college search.